

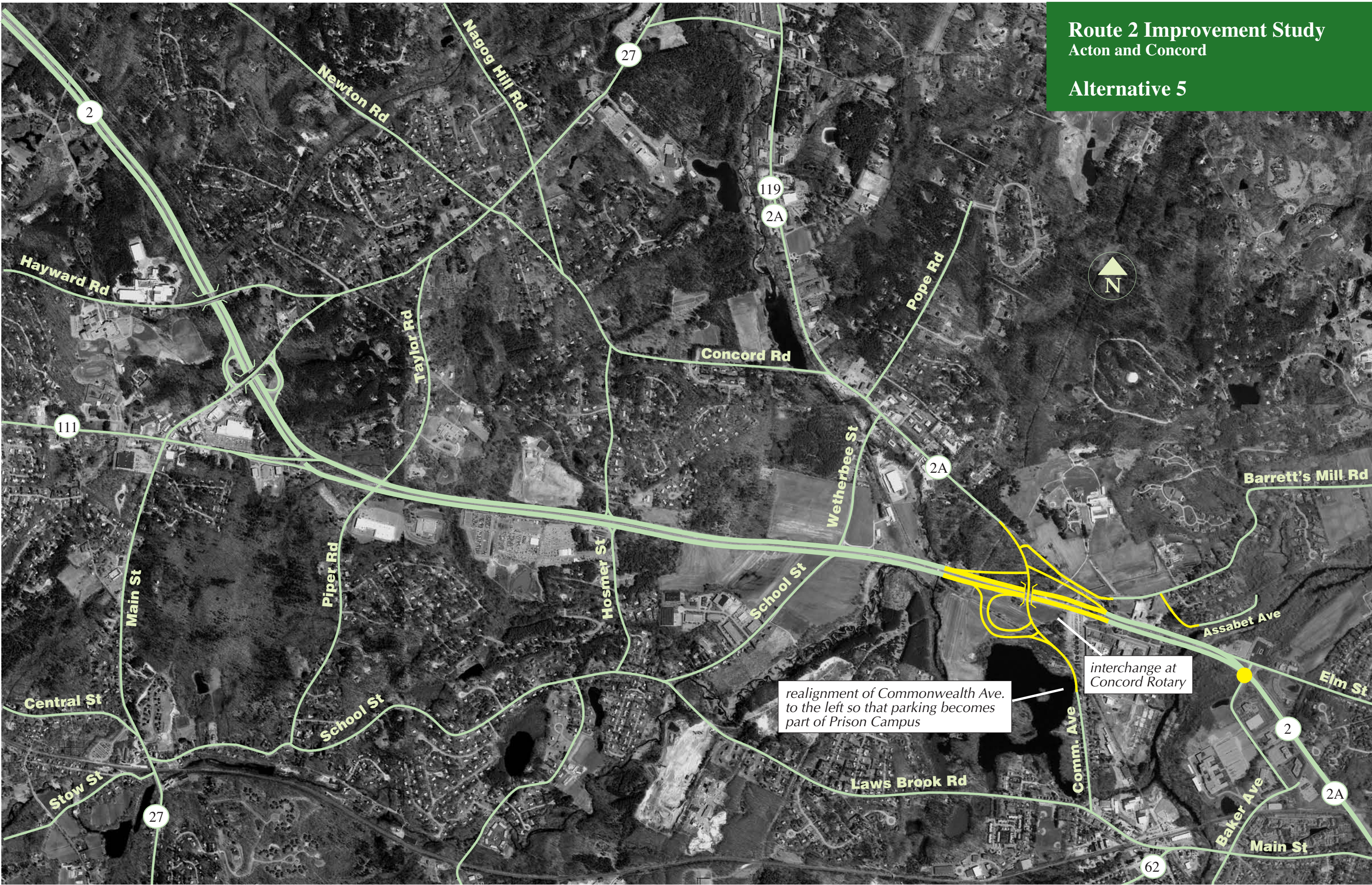
APPENDIX C

Alternative Packages for Route 2 in Acton and at Concord Rotary

- Alternative 5: Partial Cloverleaf with Diamond Ramps at Concord Rotary
- Alternative 5A: Alternative 5 with Hosmer Street Interchange, Piper/Taylor Roads Interchange, and CD (Collector and Distributor) Roads in Between
- Alternative 5B: Alternative 5 with Bridge Only at School/Wetherbee Streets, Interchange at Hosmer Street, and Bridge Only at Piper/Taylor Roads
- Alternative 1A: Alternative 1 (Signalized Intersection) at Concord Rotary with Interchange at School/Wetherbee Streets, Cul de Sac at Hosmer Street, and Bridge Only at Piper/Taylor Roads
- Alternative 1B: Alternative 1 with Flyover Connection at Wetherbee Street, Cul de Sac at School Street, Diamond Interchange at Hosmer Street, and Cul de Sac at Piper/Taylor Roads
- Alternative 1C: Alternative 1 with Interchange at School Street and a New Road west of Wetherbee Street, Cul de Sac at Wetherbee Street, Bridge Only at Hosmer Street, Interchange at Piper/Taylor Roads, and Relocation of Route 111/Route 2 Ramps

Route 2 Improvement Study
Acton and Concord

Alternative 5



realignment of Commonwealth Ave.
to the left so that parking becomes
part of Prison Campus

interchange at
Concord Rotary